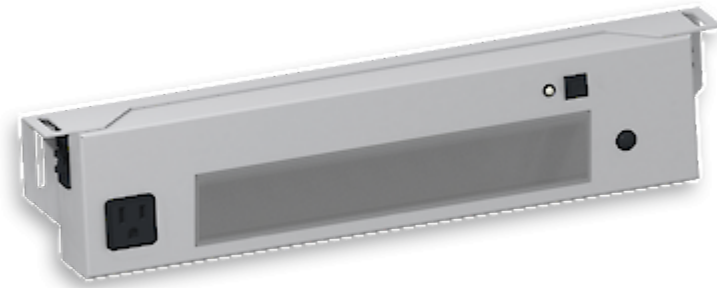


**Sensor operated LED lamp. Only for installation inside industrial control cabinets.**



## Description

<b>Order Number:</b>	490513612
<b>Colour:</b>	RAL 9003
<b>Housing Material:</b>	Mild steel, powder coated
<b>IP protection class to EN 60 529:</b>	IP 20
<b>Included:</b>	Motion sensor NEMA 5-15 outlet (max. 10.6 A) Daisy Chain
<b>SK notes:</b>	Suitable for damp locations
<b>Approvals:</b>	CE, cURus
<b>UL File Number:</b>	E358386

**Accessories:**

 Power cable AC black, 0.7 m

 Power cable AC orange, 0.7 m

 Power cable AC black, 3 m

 Power cable AC orange, 3 m

 Daisy Chain cable AC black, 0.7 m

 Daisy Chain cable AC orange, 0.7 m

 Daisy Chain cable AC black, 1.2 m

 Daisy Chain cable AC orange, 1.2 m

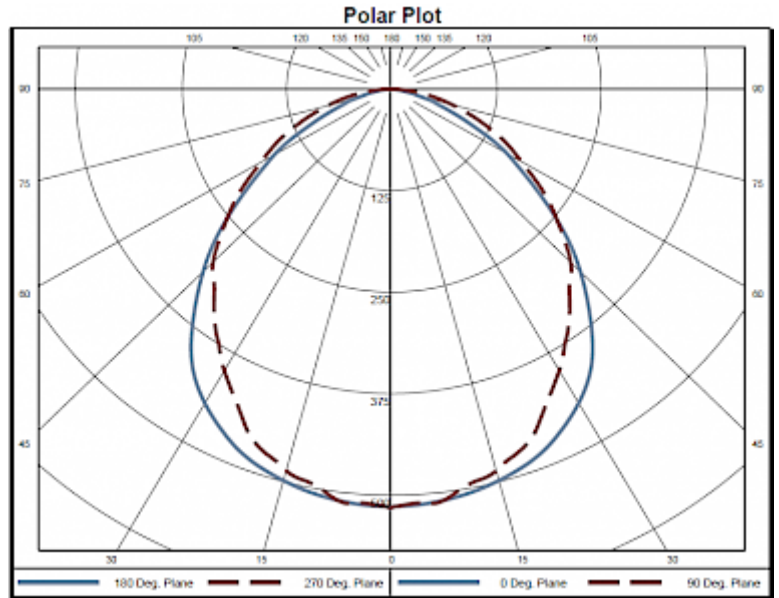
---

## Technical Data

<b>Operating Temperature Range:</b>	-30°C - 50°C
<b>Mounting:</b>	M5 screws (x2)
<b>Dimensions A x B x C (D+E):</b>	420 x 90 x 45 mm
<b>Weight:</b>	2 kg
<b>Voltage / Frequency:</b>	115 V ~ 50/60 Hz
<b>Rated current:</b>	10.6 A
<b>Power consumption:</b>	16 W
<b>Lamp:</b>	EB-7801
<b>Luminosity:</b>	1500 lm / 5100 K
<b>Lifetime:</b>	60,000 hrs. @ 20°C
<b>Connection:</b>	Connector

Please click on the graphics to download.  
More CAD drawings can be found under [Product Download](#).  
> [Overview Product Group STRIPLITE - LED Enclosure Lights](#)

**Performance graph:**



[click image to enlarge](#)

## Order Information

**Taric code**

94054990

---