

Cabinet cooling unit



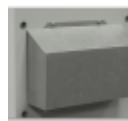
Description

Order Number:	856220001
Brand Name:	SLIMLINE PRO
Colour:	RAL 7035
Housing Material:	Mild steel, powder coated
IP protection class to EN 60 529:	IP 55 / Type 12
Approvals:	CE, cURus, cULus

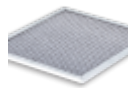
Accessories:



Gasket Kit Type 4



Cold Air Outlet Duct 8540/62



Washable Aluminium Filter 8562



Vibration Protection Kit 3

Technical Data

Cooling capacity L35L35 (EN14511-3):	6000 W @ 50 Hz 6200 W @ 60 Hz
Cooling capacity L35L50 (EN14511-3):	5000 W @ 50 Hz 5500 W @ 60 Hz
EER L35L35:	2.0
Compressor type:	Scroll
Refrigerant / GWP:	R134a / 1430
Refrigerant charge:	1200 g / 42 oz.
High / low Pressure:	32 / 6 bar 460 / 88 psi
Air flow volume (system / unimpeded):	Ambient air circuit: 1000 / 1400 m ³ /h Cabinet air circuit: 1050 / 1400 m ³ /h
Operating Temperature Range:	10°C - 55°C
UL temperature range:	10°C - 55°C
Mounting:	Wall mounted / recessed
Dimensions A x B x C (D+E):	1,630 x 455 x 270 (75+195) mm
Weight:	86.5 kg
Voltage / Frequency:	380-415 V 50 Hz 3~ 400-460 V 60 Hz 3~
UL Voltage / Frequency:	460 V / 60Hz 3~
Current L35L35:	6.2 A @ 50 Hz 6.3 A @ 60 Hz
Starting current:	52 A
Max. current:	10.5 A
Nominal power L35L35:	3.1 kW @ 50 Hz 3.9 kW @ 60 Hz
Max. power:	7.0 kW
Fuse:	15 A (T)
Max circuit ampacity:	15 A
Short-circuit current rating:	5 kA
Rated current compressor:	6.4 A

Full load current fans:

1.3 A

Connection:

4 pole terminal block for power

5 pole terminal block for signals

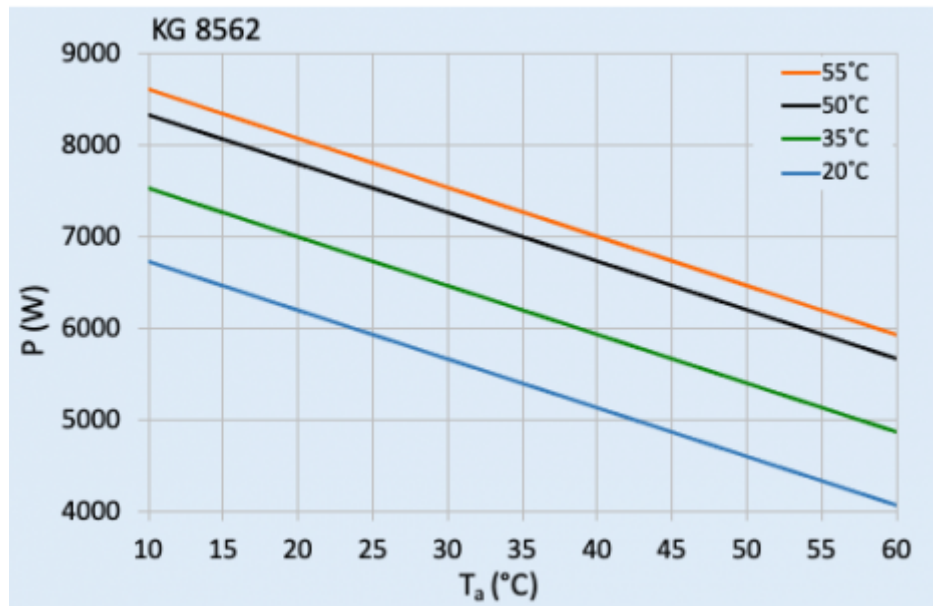
3 pole terminal block for RS 485

Please click on the graphics to download.

More CAD drawings can be found under [Product Download](#).

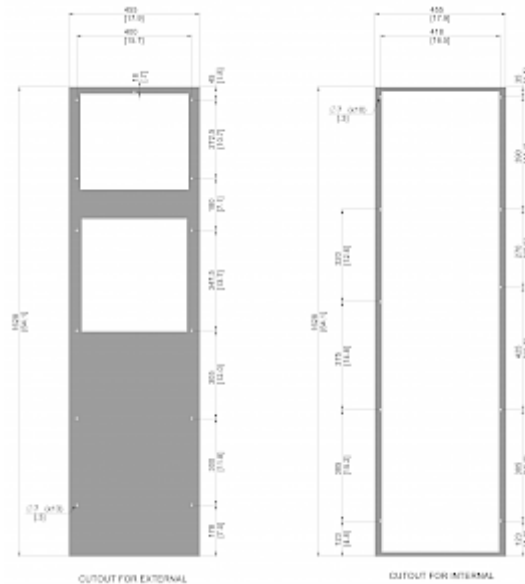
> [Overview Product Group SLIMLINE PRO - cooling units in a new design](#)

Performance graph:



[click image to enlarge](#)

Cut out Dimensions:



[click image to enlarge](#)

Order Information

Box dimensions	1642 x 555 x 299 mm
Gross weight	97.5 Kg
Taric code	84158200