

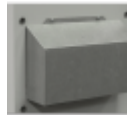
Cabinet cooling unit



Description

Order Number:	850320S62
Brand Name:	SLIMLINE PRO
Housing Material:	Stainless steel AISI 304 (V2A)
IP protection class to EN 60 529:	IP 56 / Type 12, 3, 3R, 4, 4X
Approvals:	CE, cURus, cULus

Accessories:



[Cold Air Outlet Duct 8503/06](#)



[Washable Aluminium Filter 8503/06](#)

Technical Data

Cooling capacity L35L35 (EN14511-3):	350 W @ 50 Hz 380 W @ 60 Hz
Cooling capacity L35L50 (EN14511-3):	200 W @ 50 Hz 215 W @ 60 Hz
EER L35L35:	1.13
Compressor type:	Rotary Piston
Refrigerant / GWP:	R 513A / 630
Refrigerant charge:	100 g / 3.5 oz
High / low Pressure:	28 / 6 bar 406 / 88 psi
Air flow volume (system / unimpeded):	Ambient air circuit: 225 / 408 m ³ /h Cabinet air circuit: 122 / 180 m ³ /h
Operating Temperature Range:	10°C - 55°C
UL temperature range:	10°C - 55°C
Mounting:	Wall mounted / recessed
Dimensions A x B x C (D+E):	600 x 250 x 187.6 (48.6+139) mm
Weight:	15.5 kg
Voltage / Frequency:	400/460 V - 50/60 Hz 2~
UL Voltage / Frequency:	460 V / 60Hz 2~
Current L35L35:	0.9 A @ 50 Hz 0.9 A @ 60 Hz
Starting current:	2.0 A
Max. current:	1.0 A
Nominal power L35L35:	310 W @ 50 Hz 310 W @ 60 Hz
Max. power:	380 W
Fuse:	15 A (T)
Max circuit ampacity:	15 A
Short-circuit current rating:	5 kA
Rated current compressor:	0.6 A
Full load current fans:	0.12 A

Connection:

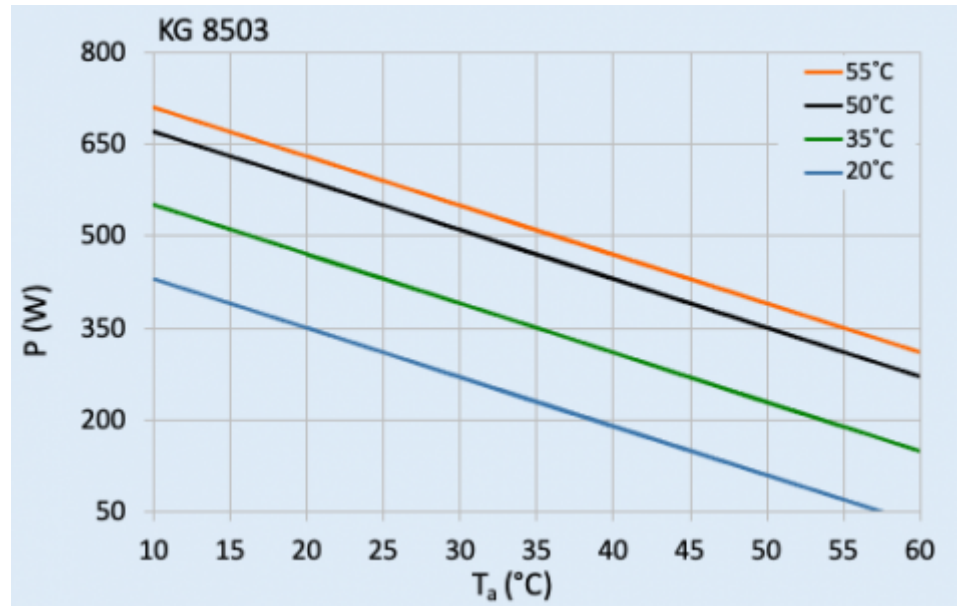
4 pole terminal for power
5 pole terminal for signals
3 pole terminal for RS485

Please click on the graphics to download.

More CAD drawings can be found under [Product Download](#).

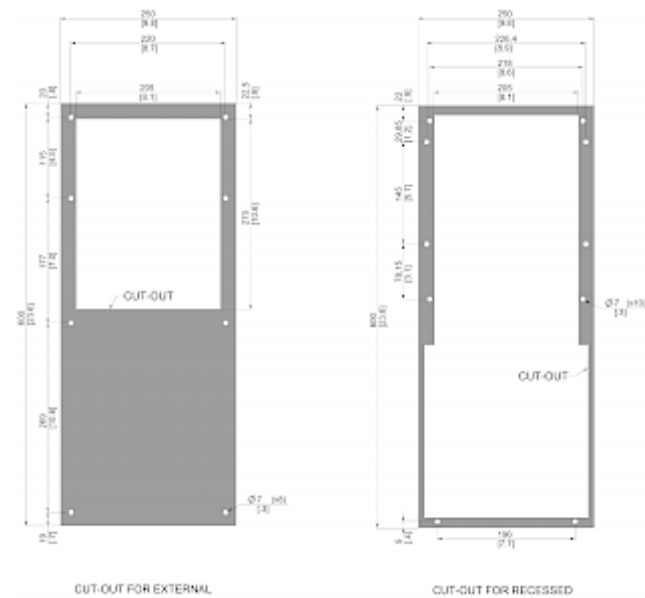
> [Overview Product Group SLIMLINE PRO - cooling units in a new design](#)

Performance graph:



click image to enlarge

Cut out Dimensions:



click image to enlarge

Order Information

Box dimensions	692 x 285 x 242 mm
Gross weight	17 Kg
Taric Code	84158200
GTIN (EAN)	5350604390003