

Cabinet cooling unit



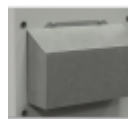
Description

| | |
|----------------------------|----------------------------------------------|
| Order Number: | 841200001 |
| Brand Name: | SLIMLINE PRO |
| Colour: | RAL 7035 |
| Housing Material: | Mild steel, powder coated |
| Ingress Protection: | IP 55 / Type 12 |
| Note: | Has the same cutout like KG 8508 and KG 8512 |
| Approvals: | CE, cURus, cULus |

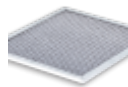
Accessories:



Gasket Kit Type 4



Cold Air Outlet Duct 8508/12/8412



Washable Aluminium Filter 8508/12/8412



Vibration Protection Kit 1

Technical Data

| | |
|----------------------------------------------|--------------------------------------------------------------------------------------------------------|
| Cooling capacity L35L35 (EN14511-3): | 1500 W @ 50 Hz 1550 W @ 60 Hz |
| Cooling capacity L35L50 (EN14511-3): | 1270 W @ 50 Hz 1330 W @ 60 Hz |
| EER L35L35: | 2.20 |
| Compressor type: | Rotary piston |
| Refrigerant / GWP: | R134a / 1430 |
| Refrigerant charge: | 267 g / 9.4 oz |
| High / low Pressure: | 30 / 6 bar 435 / 88 psi |
| Operating Temperature Range: | 10°C - 60°C |
| UL temperature range: | 10°C - 60°C |
| Air flow volume (system / unimpeded): | Ambient air circuit: 550 / 850 m ³ /h Enclosure air circuit: 350 / 850 m ³ /h |
| Mounting: | Wall mounted / recessed |
| Dimensions A x B x C (D+E): | 950 x 395 x 250 (55+195) mm |
| Weight: | 38.5 kg |
| Voltage / Frequency: | 230 V ~ 50/60 Hz |
| UL Voltage / Frequency: | 230 V ~ 60 Hz |
| Current L35L35: | 3.2 A @ 50 Hz 3.6 A @ 60 Hz |
| Starting current: | 16 A |
| Max. current: | 4.7 A |
| Nominal power L35L35: | 680 W @ 50 Hz 830 W @ 60 Hz |
| Max. power: | 1.1 kW |
| Fuse: | 15 A (T) |
| Max circuit ampacity: | 15 A |
| Short-circuit current rating: | 5 kA |
| Rated current compressor: | 2.5 A |

Full load current fans:

0.7 A

Connection:

4 pole terminal block for power

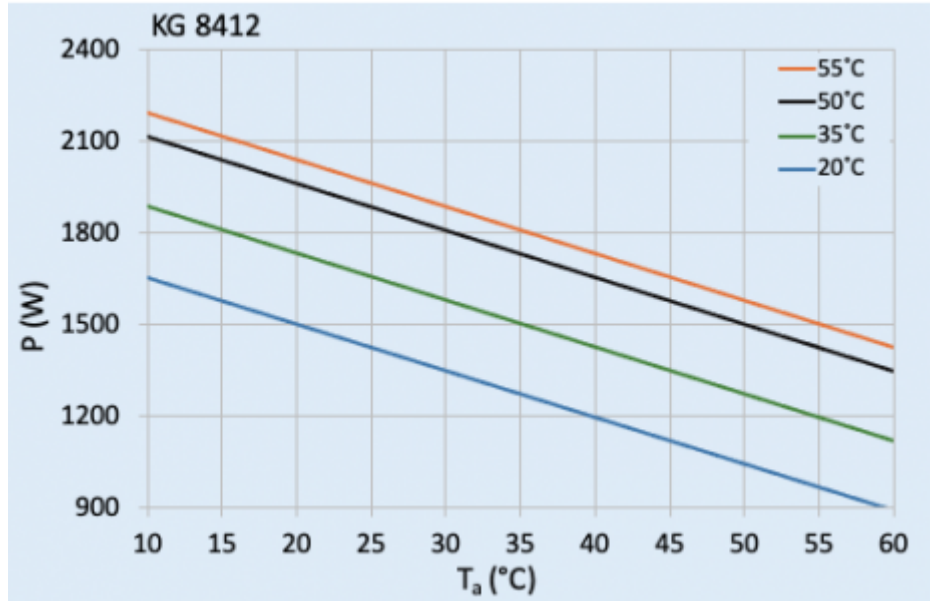
5 pole terminal block for signals

3 pole terminal block for RS 485

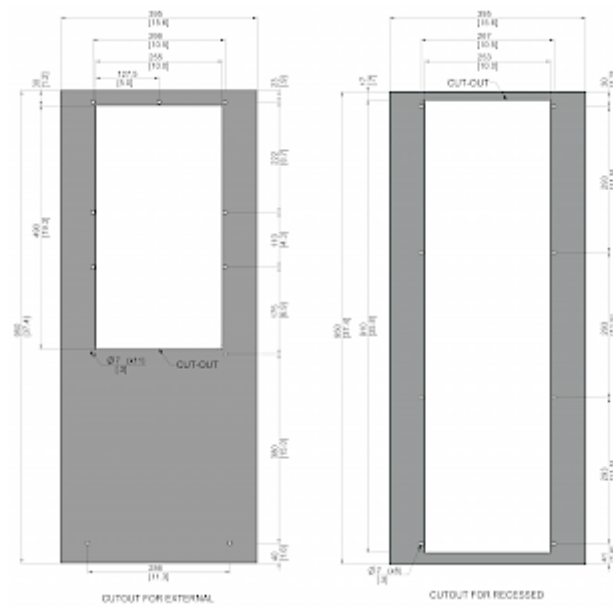
Please click on the graphics to download.

More CAD drawings can be found under [Product Download](#).

> [Overview Product Group SLIMLINE PRO - cooling units in a new design](#)

Performance graph:


click image to enlarge

Cut Out Dimension:


click image to enlarge

Order Information

Box dimensions 1042 x 495 x 283 mm

Gross weight 44 Kg

Taric code 84158200