

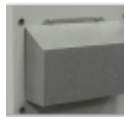
Cabinet cooling unit



Description

Order Number:	850810S62
Brand Name:	SLIMLINE PRO
Housing Material:	Stainless steel AISI 304 (V2A)
Ingress Protection:	IP 56 / Type 12, 3, 3R, 4, 4X
Approvals:	CE, CURus, cULus

Accessories:



[Cold Air Outlet Duct 8508/12/8412](#)



[Washable Aluminium Filter 8508/12/8412](#)



[Vibration Protection Kit 1](#)

Technical Data

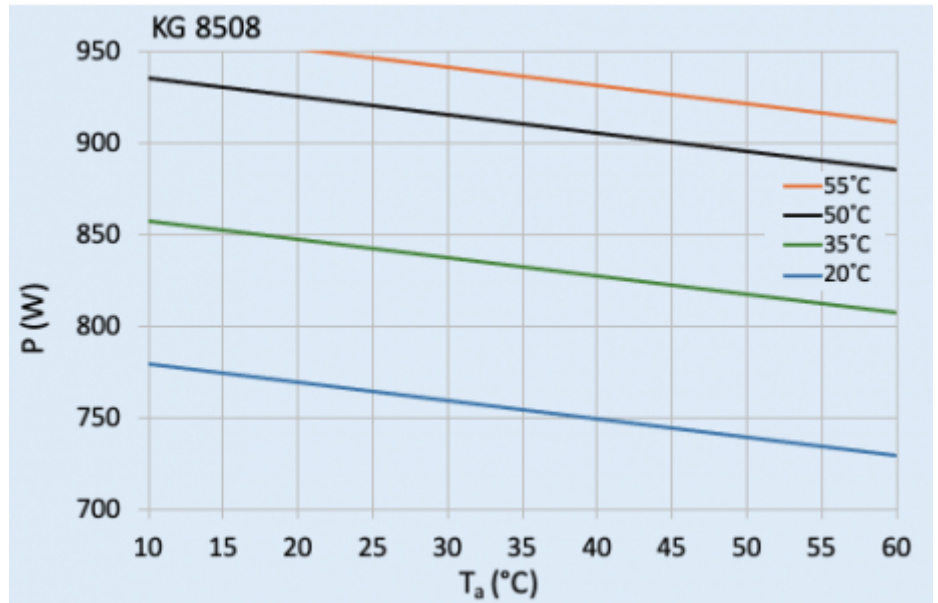
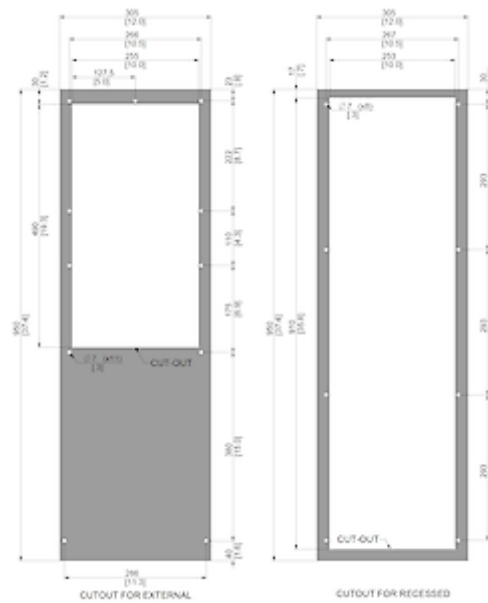
Cooling capacity L35L35 (EN14511-3):	825 W @ 50 Hz 870 W @ 60 Hz
Cooling capacity L35L50 (EN14511-3):	820 W @ 50 Hz 835 W @ 60 Hz
EER L35L35:	1.80
Compressor type:	Rotary piston
Refrigerant / GWP:	R134a / 1430
Refrigerant charge:	175 g / 6.2 oz
High / low Pressure:	30 / 6 bar 435 / 88 psi
Operating Temperature Range:	10°C - 60°C
UL temperature range:	10°C - 55°C
Air flow volume (system / unimpeded):	Ambient air circuit: 370 / 650 m ³ /h Cabinet air circuit: 350 / 550 m ³ /h
Mounting:	Wall mounted / recessed
Dimensions A x B x C (D+E):	950 x 305 x 210 (55+155) mm
Weight:	30 kg
Voltage / Frequency:	120 V ~ 50/60 Hz
UL Voltage / Frequency:	120 V ~ 60 Hz
Current L35L35:	4.2 A @ 50 Hz 4.6 A @ 60 Hz
Starting current:	28 A
Max. current:	6.8 A
Nominal power L35L35:	460 W @ 50 Hz 520 W @ 60 Hz
Max. power:	690 W
Fuse:	15 A (T)
Max circuit ampacity:	15 A
Short-circuit current rating:	5 kA
Rated current compressor:	3.2 A

Full load current fans:	2.5 A
Connection:	4 pole terminal block for power 5 pole terminal block for signals 3 pole terminal block for RS 485

Please click on the graphics to download.

More CAD drawings can be found under [Product Download](#).

> [Overview Product Group SLIMLINE PRO - cooling units in a new design](#)

Performance graph:

[click image to enlarge](#)
Cut Out Dimension:

[click image to enlarge](#)

Order Information

Box dimensions 1042 x 405 x 242 mm

Gross weight 31 Kg

Taric code 84158200