

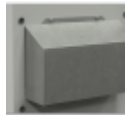
Cabinet cooling unit



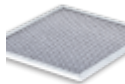
Description

Order Number:	851220S62
Brand Name:	SLIMLINE PRO
Housing Material:	Stainless steel AISI 304 (V2A)
IP protection class to EN 60 529:	IP 56 / Type 12, 3, 3R, 4, 4X
Approvals:	CE, cURus, cULus

Accessories:



[Cold Air Outlet Duct 8508/12/8412](#)



[Washable Aluminium Filter 8508/12/8412](#)



[Vibration Protection Kit 1](#)

Technical Data

Cooling capacity L35L35 (EN14511-3):	1200 W @ 50 Hz 1260 W @ 60 Hz
Cooling capacity L35L50 (EN14511-3):	900 W @ 50 Hz 1000 W @ 60 Hz
Compressor type:	Rotary piston
Refrigerant / GWP:	R 513A / 630
Refrigerant charge:	230 g / 8.1 oz.
High / low Pressure:	30 / 6 bar 435 / 88 psi
Air flow volume (system / unimpeded):	Ambient air circuit: 300 / 550 m ³ /h Cabinet air circuit: 350 / 550 m ³ /h
Operating Temperature Range:	10°C - 60°C
UL temperature range:	10°C - 60°C
Mounting:	Wall mounted / recessed
Dimensions A x B x C (D+E):	950 x 305 x 210 (55+155) mm
Weight:	33 kg
Voltage / Frequency:	380-415 V 50 Hz 3~ 400-460 V 60 Hz 3~
UL Voltage / Frequency:	460 V / 60Hz 3~
Current L35L35:	1.6 A @ 50 Hz 1.6 A @ 60 Hz
Starting current:	8.2 A
Max. current:	2.0 A
Nominal power L35L35:	700 W @ 50 Hz 875 @ 60 Hz
Max. power:	1.2 kW
Fuse:	15 A (T)
Max circuit ampacity:	15 A
Short-circuit current rating:	5 kA
Rated current compressor:	1.3 A
Full load current fans:	1.3 A

Connection:

4 pole terminal for power

5 pole terminal for signals

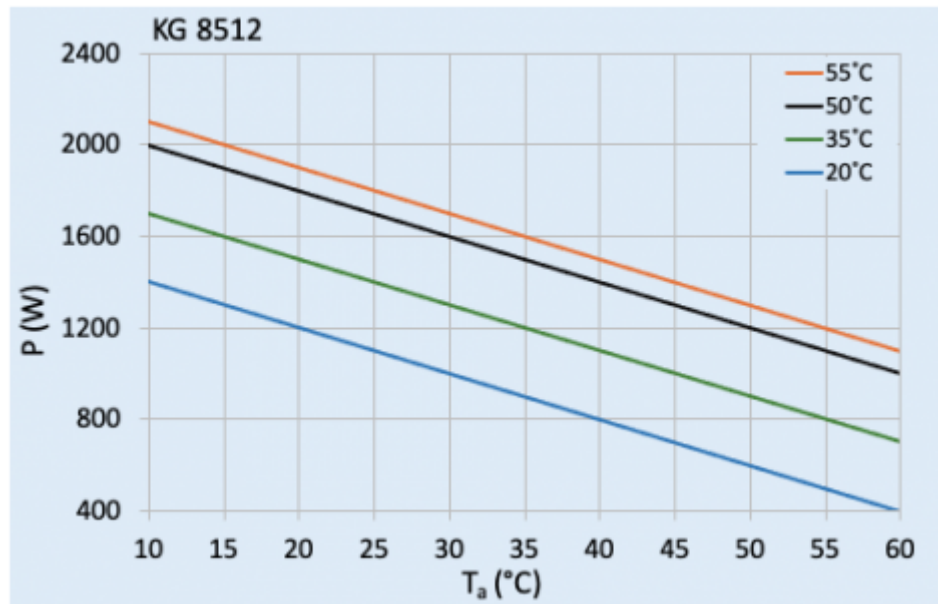
3 pole terminal for RS 485

Please click on the graphics to download.

More CAD drawings can be found under [Product Download](#).

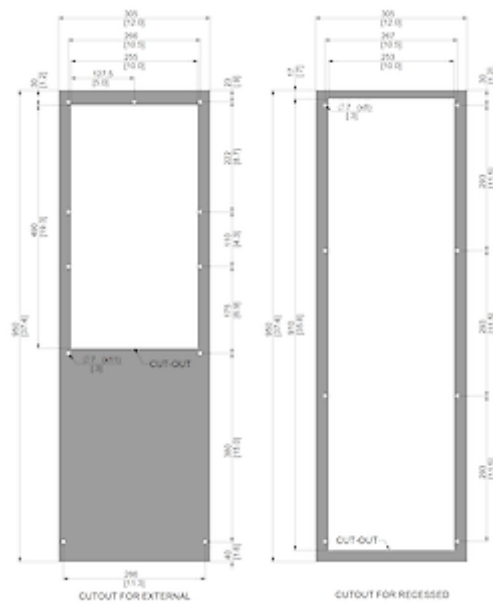
> [Overview Product Group SLIMLINE PRO - cooling units in a new design](#)

Performance graph:



[click image to enlarge](#)

Cut out Dimensions:



[click image to enlarge](#)

Order Information

Box dimensions 1042 x 405 x 242 mm

Gross weight 36 Kg

Taric code 84158200