



# THERMAL MANAGEMENT FOR ENCLOSURES AND MACHINERY

---

SEIFERT SYSTEMS  
PRODUCT OVERVIEW 24.1

# TABLE OF CONTENTS

---

|   |         |
|---|---------|
| <b>ENCLOSURE COOLING UNITS INDOOR</b>                                   | 3       |
| SLIMLINE PRO & VARIO  | 4       |
| SLIMLINE PRO TOP (roof mounted)   | 4       |
| SLIMLINE  | 4       |
| COMPACT INDOOR  | 5       |
| <b>ENCLOSURE COOLING UNITS OUTDOOR, UL TYPE 4X, CORROSION RESISTANT</b> | 6       |
| COMPACT OUTDOOR   | 7       |
| SOLITHERM PROTEC  | 7       |
| <b>SOLITHERM PELTIER, ATEX CLASSIFIED</b>                               |         |
| Thermoelectric cooling units, dehumidifiers                             | 8       |
| <b>SOLITHERM 19" RACK</b>   |         |
| Cooling units / heat exchangers for 19" racks                           | 9       |
| <b>SLIMLINE HEX HEAT EXCHANGERS</b>                                     |         |
| Air / water and air / air heat exchangers                               | 10 - 11 |
| <b>SOLITHERM CHILL</b>  |         |
| Chillers  | 12      |
| <b>SOLIFLEX FILTER FANS / EXHAUST FILTERS</b>                           |         |
| Filter fans   | 13      |
| Filter fans roof mounted  | 13      |
| <b>SOLIFLEX ENCLOSURE HEATERS</b>                                       |         |
| Heaters / fan heaters   | 14      |
| <b>SOLIFLEX ENCLOSURE ACCESSORIES</b>                                   |         |
| Thermostats / Hygrostats / Sensors                                      | 15      |
| <b>ENCLOSURE LIGHTING</b>   |         |
| STRIPLITE LED Lights  | 15      |

# ENCLOSURE COOLING UNITS FOR INDOOR APPLICATIONS

SLIMLINE ORIGINAL, PRO, VARIO, TOP, COMPACT INDOOR

Seifert Indoor cooling units can be wall, recessed or roof mounted. The modern and compact design allows an optimal relationship between cooling capacity and dimensions. All our enclosure cooling units are supplied in mild steel powder coated housing.

With cooling capacities from 320 W to 6,200 W and stainless steel housing for enhanced corrosion protection or for heavily polluted environments, we are able to cover most requirements in the industrial enclosure air conditioning.



SLIMLINE PRO TOP series

SLIMLINE PRO / VARIO series



SLIMLINE series

COMPACT INDOOR series



## SLIMLINE PRO / VARIO

Enclosure cooling with a new design



- ✓ Microchannel condenser allows significant reduction in refrigerant charge resulting in a lower CO<sub>2</sub> equivalent
- ✓ Built in electrical condensate evaporation
- ✓ Enhanced protection class of IP 55/ Type 12
- ✓ UL Type 4X for stainless steel models
- ✓ Operating temperature range 10°C - 60°C
- ✓ VARIO: Variable cooling capacity with variable speed compressor
- ✓ Cutout compatible with SLIMLINE HEX air / water heat exchangers



| Model   | Cooling capacity (L35L35) | Available voltages   | Dimensions (H x W x D) mm |
|---------|---------------------------|--|---------------------------|
| KG 8503 | 350 W                     | 120 V ~ 50/60 Hz, 230 V ~ 50/60 Hz   | 600 x 250 x 135           |
| KG 8505 | 650W                      | 120 V ~ 50/60 Hz, 230 V ~ 50/60 Hz   | 370 x 520 x 155           |
| KG 8506 | 670 W                     | 120 V ~ 50/60 Hz, 230 V ~ 50/60 Hz<br>400/460 V 50/60 Hz 2 ~                 | 600 x 250 x 135           |
| KG 8508 | 825 W                     | 120 V ~ 50/60 Hz, 230 V ~ 50/60 Hz<br>380-415 V 50 Hz 2~ 400-460 V 60 Hz 2 ~ | 950 x 305 x 210           |
| KG 8512 | 1,200 W                   | 120 V ~ 50/60 Hz, 230 V ~ 50/60 Hz<br>380-415 V 50 Hz 3~ 400-460 V 60 Hz 3 ~ | 950 x 305 x 210           |
| KG 8412 | 1,500 W                   | 120 V ~ 50/60 Hz, 230 V ~ 50/60 Hz<br>380-415 V 50 Hz 3~ 400-460 V 60 Hz 3 ~ | 950 x 395 x 250           |
| KG 8515 | 1,500 W                   | 120 V ~ 50/60 Hz, 230 V ~ 50/60 Hz<br>380-415 V 50 Hz 3~ 400-460 V 60 Hz 3 ~ | 1,350 x 395 x 210         |
| KG 8520 | 2,000 W                   | 120 V ~ 50/60 Hz, 230 V ~ 50/60 Hz<br>380-415 V 50 Hz 3~ 400-460 V 60 Hz 3 ~ | 1,350 x 395 x 210         |
| KG 8525 | 2,500 W                   | 120 V ~ 50/60 Hz, 230 V ~ 50/60 Hz<br>380-415 V 50 Hz 3~ 400-460 V 60 Hz 3 ~ | 1,350 x 395 x 210         |
| KG 8540 | 4,000 W                   | 230 V ~ 50/60 Hz<br>380-415 V 50 Hz 3~ 400-460 V 60 Hz 3 ~                   | 1,550 x 455 x 270         |
| KG 8562 | 6,200 W                   | 380-415 V 50 Hz 3~ 400-460 V 60 Hz 3 ~                                       | 1,630 x 455 x 265         |
| KG 8625 | 500 W - 2,550 W           | 115 - 230 V ~ 50/60 Hz   | 1,350 x 395 x 210         |
| KG 8650 | 2,000 W - 5,000 W         | 230 V ~ 50/60 Hz   | 1,550 x 455 x 270         |

## SLIMLINE PRO TOP

when there is no space available



- ✓ maximum cooling power with minimum space
- ✓ Temperature range 5°C - 55°C
- ✓ Digital controller with display
- ✓ Built in electrical condensate evaporation



| Model        | Cooling capacity (L35L35) | Voltage / Frequency                                      | Dimensions (H x W x D) mm |
|--------------|---------------------------|--|---------------------------|
| KG 9506      | 600 W                     | 230 V ~ 50/60 Hz   | 368 x 400 x 325           |
| KG 9508      | 800 W                     | 230 V ~ 50/60 Hz, 380-415 V 50 Hz 3~ 400-460 V 60 Hz 3 ~ | 412 x 595 x 395           |
| KG 9512 / 15 | 1,200 W / 1,500 W         | 230 V ~ 50/60 Hz, 380-415 V 50 Hz 3~ 400-460 V 60 Hz 3 ~ | 412 x 595 x 395           |
| KG 9520      | 2,000 W                   | 230 V ~ 50/60 Hz, 380-415 V 50 Hz 3~ 400-460 V 60 Hz 3 ~ | 412 x 595 x 395           |
| KG 9530      | 3,000 W                   | 380-415 V 50 Hz 3~ 400-460 V 60 Hz 3 ~                   | 435 x 595 x 475           |
| KG 9540      | 4,000 W                   | 380-415 V 50 Hz 3~ 400-460 V 60 Hz 3 ~                   | 456 x 795 x 575           |



## SLIMLINE

Filterless cooling for more reliability



- ✓ Completely filterless, thus maintenance free
- ✓ Only 110 mm deep, ideal for smaller enclosures (KG 4266,67,69)
- ✓ Protection class IP 54 / Type 12
- ✓ Operating temperature range 10°C - 55°
- ✓ Mounting template and condensation kit included
- ✓ NEMA 4X covers for stainless steel models available



| Model   | Cooling capacity (L35L35) | Available voltages   | Dimensions (H x W x D) mm |
|---------|---------------------------|--|---------------------------|
| KG 4266 | 320 W                     | 120 V ~ 60 Hz, 230 V ~ 50/60 Hz  | 520 x 270 x 110           |
| KG 4267 | 400W                      | 120 V ~ 60 Hz, 230 V ~ 50/60 Hz  | 340 x 520 x 110           |
| KG 4269 | 500 W                     | 120 V ~ 60 Hz, 230 V ~ 50/60 Hz<br>400/460 V 50/60 Hz 2 ~                    | 600 x 320 x 110           |
| KG 4271 | 820 W                     | 120 V ~ 50/60 Hz, 230 V ~ 50/60 Hz<br>380-415 V 50 Hz 3~ 400-460 V 60 Hz 3 ~ | 980 x 395 x 145           |
| KG 4272 | 1,100 W                   | 120 V ~ 60 Hz, 230 V ~ 50/60 Hz<br>380-415 V 50 Hz 3~ 400-460 V 60 Hz 3 ~    | 1,250 x 395 x 145         |
| KG 4274 | 1,500 W                   | 120 V ~ 60 Hz, 230 V ~ 50/60 Hz<br>380-415 V 50 Hz 3~ 400-460 V 60 Hz 3 ~    | 1,550 x 395 x 145         |



## COMPACT INDOOR

The economical all-round solution



- ✓ Nano coated hydrophobic condenser
- ✓ Various filter options for polluted environments
- ✓ Adjustable electronic controller with display
- ✓ Operating temperature range 10°C - 55°C
- ✓ Condensate evaporator optional
- ✓ Mounting template and condensation kit included



| Model   | Cooling capacity (L35L35) | Available voltages   | Dimensions (H x W x D) mm            |                  |
|---------|---------------------------|--|--------------------------------------|------------------|
|         |                           |  | Wall mounted                         | Recessed         |
| KG 4304 | 320 W                     | 120 V ~ 60 Hz, 230 V ~ 50/60 Hz  | 501,6 x 280 x 200                    | auf Anfrage      |
| KG 4305 | 550 W                     | 230 V ~ 50/60 Hz<br>120 V ~ 60 Hz, 400/460 V 50/60 Hz 2 ~                    | 650 x 315 x 260<br>651,4 x 315 x 260 | 715 x 372 x 260  |
| KG 4309 | 850 W                     | 120 V ~ 60 Hz, 230 V ~ 50/60 Hz<br>400/460 V 50/60 Hz 2 ~                    | 651.4 x 315 x 260                    | 715 x 372 x 260  |
| KG 4310 | 1,000 W                   | 120 V ~ 50/60 Hz, 230 V ~ 50/60 Hz<br>380-415 V 50 Hz 3~ 400-460 V 60 Hz 3 ~ | 651.4 x 315 x 260                    | 715 x 372 x 260  |
| KG 4315 | 1,500 W                   | 120 V ~ 50/60 Hz, 230 V ~ 50/60 Hz<br>380-415 V 50 Hz 3~ 400-460 V 60 Hz 3 ~ | 980 x 395 x 260                      | 1045 x 452 x 270 |
| KG 4320 | 2,000 W                   | 120 V ~ 50/60 Hz, 230 V ~ 50/60 Hz<br>380-415 V 50 Hz 3~ 400-460 V 60 Hz 3 ~ | 980 x 395 x 260                      | 1045 x 452 x 270 |
| KG 4325 | 2,500 W                   | 120 V ~ 50/60 Hz, 230 V ~ 50/60 Hz<br>380-415 V 50 Hz 3~ 400-460 V 60 Hz 3 ~ | 1230 x 500 x 340                     | 1295 x 557 x 340 |
| KG 4330 | 3,000 W                   | 120 V ~ 50/60 Hz, 230 V ~ 50/60 Hz<br>380-415 V 50 Hz 3~ 400-460 V 60 Hz 3 ~ | 1230 x 500 x 340                     | 1295 x 557 x 340 |
| KG 4340 | 4,000 W                   | 120 V ~ 50/60 Hz, 230 V ~ 50/60 Hz<br>380-415 V 50 Hz 3~ 400-460 V 60 Hz 3 ~ | 1230 x 500 x 340                     | 1295 x 557 x 340 |

# ENCLOSURE COOLING FOR OUTDOOR & NEMA / TYPE 4X

COMPACT OUTDOOR / UL TYPE 4X, PROTEC

COMPACT OUTDOOR enclosure cooling units are designed to be wall-mounted and have separate internal and ambient air circuits. The TYPE 4X units are particularly suitable for harsh outdoor applications. They can be supplied with an optional enclosure heater and in stainless steel 304 (V2A) or 316 (V4A) housing. The operating temperature range of  $-40^{\circ}\text{C}$  to  $55^{\circ}\text{C}$  guarantees trouble-free operation even at particularly low temperatures or in extreme heat.

SOLITHERM PROTEC cooling units are designed for use in extremely harsh environments, for example for applications in the petrochemical industry, in water treatment plants and in port areas. The coated condenser and coated internal pipes on the ambient side as well as a stainless steel housing made of V4A (AISI 316) ensure enhanced protection against chemicals and salt fog.



PROTEC series



COMPACT OUTDOOR series



## COMPACT OUTDOOR / UL TYPE 4X

For demanding environmental conditions



- ✓ Stainless steel models comply to NEMA / UL Type 4X
- ✓ Adjustable electronic controller with display (rear)
- ✓ Condensate evaporator, enclosure heater and aluminium filter as a standard
- ✓ Mounting template and condensation kit included
- ✓ Maintenance free



| Model   | Cooling capacity (L35L35) | Available voltages   | Dimensions (H x W x D) mm |
|---------|---------------------------|--|---------------------------|
| OC 5704 | 290 W                     | 120 V ~ 60 Hz, 230 V ~ 50/60 Hz  | 480 x 250 x 190           |
| OC 5705 | 550 W                     | 120 V ~ 50/60 Hz, 230 V ~ 50/60 Hz<br>400/460 V 50/60 Hz 2 ~                 | 830 x 304 x 270           |
| OC 5708 | 750 W                     | 120 V ~ 50/60 Hz, 230 V ~ 50/60 Hz<br>400/460 V 50/60 Hz 2 ~                 | 830 x 304 x 270           |
| OC 5710 | 1,000 W                   | 120 V ~ 50/60 Hz, 230 V ~ 50/60 Hz<br>400/460 V 50/60 Hz 2 ~                 | 900 x 304 x 270           |
| OC 5715 | 1,500 W                   | 120 V ~ 50/60 Hz, 230 V ~ 50/60 Hz<br>400/460 V 50/60 Hz 2 ~                 | 1,150 x 395 x 270         |
| OC 5720 | 2,000 W                   | 120 V ~ 50/60 Hz, 230 V ~ 50/60 Hz<br>380-415 V 50 Hz 3~ 400-460 V 60 Hz 3 ~ | 1,150 x 395 x 270         |
| OC 5731 | 3,000 W                   | 120 V ~ 50/60 Hz, 230 V ~ 50/60 Hz<br>380-415 V 50 Hz 3~ 400-460 V 60 Hz 3 ~ | 1,550 x 457 x 355         |
| OC 5741 | 4,000 W                   | 230 V ~ 50/60 Hz<br>380-415 V 50 Hz 3~ 400-460 V 60 Hz 3 ~                   | 1,550 x 457 x 355         |
| OC 8762 | 6,000 W                   | 380-415 V 50 Hz 3~ 400-460 V 60 Hz 3 ~                                       | 1,135 x 455 x 390         |



## SOLITHERM PROTEC

For highly corrosive environments



- ✓ Stainless steel AISI 316 (V4A) housing
- ✓ Adjustable controller with display
- ✓ Protection class IP 56, NEMA / Type 3R, 4X
- ✓ Condensate evaporator IP 66
- ✓ Coated condenser
- ✓ Protected internal copper pipes ambient side
- ✓ RS 485 MODBUS interface



| Model   | Cooling capacity (L35L35) | Available voltages   | Dimensions (H x W x D) mm |
|---------|---------------------------|--|---------------------------|
| OC 8706 | 600 W                     | 120 V ~ 50/60 Hz, 230 V ~ 50/60 Hz                           | 380 x 250 x 250           |
| OC 8712 | 1,100 W                   | 120 V ~ 50/60 Hz, 230 V ~ 50/60 Hz<br>400/460 V 50/60 Hz 2 ~ | 585 x 305 x 305           |
| OC 8720 | 2,000 W                   | 120 V ~ 50/60 Hz, 230 V ~ 50/60 Hz<br>400/460 V 50/60 Hz 2 ~ | 890 x 395 x 305           |
| OC 8740 | 3,900 W                   | 230 V ~ 50/60 Hz<br>380-415 V 50 Hz 3~ 400-460 V 60 Hz 3 ~   | 1,040 x 455 x 370         |
| OC 8762 | 6,000 W                   | 380-415 V 50 Hz 3~ 400-460 V 60 Hz 3 ~                       | 1,135 x 455 x 390         |

# ENCLOSURE COOLING WITHOUT REFRIGERANT

## SOLITHERM PELTIER

SOLITHERM PELTIER cooling units are based on the so-called Peltier effect. When DC voltage is applied, Peltier elements generate a temperature difference which in combination with surface enlarging heat sinks and forced ventilation, causes cooling inside the enclosure. The heat is dissipated into the environment via a separate ambient heat sink.

Peltier cooling units do not require a refrigerant, have no compressor and no pressure circuit and can thus be installed in almost any position. They withstand the most extreme environments and work reliably even in very dusty and oily conditions and at temperatures between -20°C and 70°C.

SOLITHERM PELTIER cooling units with ATEX classification (zone 22) can be used for hazardous applications.



## SOLITHERM PELTIER thermoelectric cooling units



- ✓ For Indoor and Outdoor applications
- ✓ Available in AC and DC voltages
- ✓ Can be mounted in any position <sup>1)</sup>
- ✓ NEMA / Type 4X rated
- ✓ Ingress protection IP 66
- ✓ Maintenance free



| Model     | Cooling capacity (L35L35)   | Available voltages             | Dimensions (H x W x D) mm |                           |
|-----------|-----------------------------|--------------------------------|---------------------------|---------------------------|
|           |                             |                                | Recessed                  | Wall mounted (with frame) |
| TG 3030   | 30 W                        | 12 V DC                        | 110 x 154 x 132           | 212 x 158 x 137           |
| TG 3035   | 30 W                        | 24 V DC                        | 110 x 154 x 129           | 212 x 158 x 132           |
| TG 3050   | 50 W                        | 24 V DC                        | 206 x 154 x 138           | 302 x 158 x 141           |
| TG 3075   | 75 W                        | 24 V DC                        | 250 x 203 x 160           | 350 x 217 x 157           |
| TG 3102   | 100 W                       | 24 V DC                        | 200 x 305 x 138           | 302 x 306 x 141           |
| TG 3155   | 125 W                       | 24 V DC                        | 306 x 203 x 160           | 406 x 217 x 163           |
| TG 3152   | 150 W                       | 24 V DC                        | 400 x 180 x 170           | 500 x 188 x 172           |
| TG 3152EX | 150 W                       | 24 V DC                        | 405 x 185 x 165           | -                         |
| TG 3200   | 200 W                       | 24 V DC, 48 V DC               | 400 x 180 x 170           | 500 x 188 x 172           |
| TG 6105   | 100 W                       | 120 V ~60 Hz, 230 V ~ 50/60 Hz | 281 x 353 x 175           | 281 x 353 x 175           |
| TG 6155   | 150 W                       | 120 V ~60 Hz, 230 V ~ 50/60 Hz | 500 x 333 x 181           | 500 x 333 x 187           |
| TG 6205   | 200 W                       | 120 V ~60 Hz, 230 V ~ 50/60 Hz | 500 x 333 x 181           | 500 x 333 x 187           |
| TG 6405   | 400 W                       | 120 V ~60 Hz, 230 V ~ 50/60 Hz | 600 x 433 x 199           | 600 x 433 x 203           |
| TG 6805   | 800 W                       | 120 V ~60 Hz, 230 V ~ 50/60 Hz | 975 x 517 x 202           | 975 x 517 x 205           |
| TG 3903   | Thermoelectric dehumidifier | 24 V DC                        | 136 x 176 x 133           | 179 x 179 x 133           |

<sup>1)</sup> Depending on the mounting situation the condensation management may need to be considered and possibly adjusted



# ENCLOSURE COOLING FOR 19" RACKS

## SOLITHERM 19" RACK

SOLITHERM 19" RACK are compressor cooling units and air / water heat exchanger in 19" pitch size.

They guarantee efficient heat dissipation to protect the existing electronics and are ideally suited for use in data centers and server rooms. With a cooling capacity (L35W10) of 1 kW and a unit height of only 2U, our heat exchangers reach top values in terms of performance versus dimensions.

The drip-free quick-release couplings on the hose pipes enable uncomplicated and safe installation and maintenance, even when the water pressure is present.

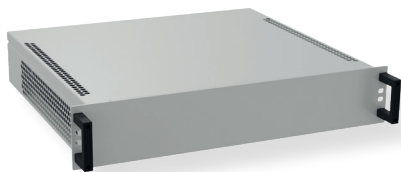


## SOLITHERM 19" RACK

Compressor cooling units and heat exchangers



- ✓ For use in 19" industrial enclosures and server cabinets
- ✓ Maintenance free
- ✓ Condensate kit included



| Cooling units | Cooling capacity (L35L35) | Available voltages              | Dimensions (H x W x D) mm |
|---------------|---------------------------|---------------------------------|---------------------------|
| KG 4533       | 550 W                     | 230 V ~ 50/60 Hz                | 5U (222) x 483 x 549      |
| KG 4534       | 850 W                     | 230 V ~ 50/60 Hz                | 5U (222) x 483 x 549      |
| KG 4535       | 900 W                     | 120 V ~ 60 Hz, 230 V ~ 50/60 Hz | 6U (266) x 483 x 549      |

| Heat exchangers | Cooling capacity (L35W10) 200 l/h | Available voltages                      | Dimensions (H x W x D) mm |
|-----------------|-----------------------------------|---|---------------------------|
| RK 2192         | 1,000 W                           | 120 V ~ 50/60 Hz, 230 V ~ 50/60 Hz      | 89 (2U) x 443 x 408       |
| RK 2194         | 2,000 W                           | 230 V ~ 50/60 Hz, 90 - 265 V ~ 50/60 Hz | 178 (4U) x 443 x 505      |
| RK 2197         | 2,100 W                           | 120 V ~ 60 Hz, 230 V ~ 50/60 Hz         | 178 (4U) x 443 x 544      |

# CUTOUT COMPATIBLE WITH ENCLOSURE COOLING UNITS

## SLIMLINE HEX air / water heat exchangers series 7500

SLIMLINE HEX air / water heat exchangers dissipate heat safely and reliably from industrial enclosures, provided a cold water connection is available.

The heat exchangers of the 7500 series are cutout compatible with our enclosure cooling units SLIMLINE PRO and VARIO. For applications where hygiene or high corrosion protection is important, we also offer our heat exchangers with stainless steel water pipes.



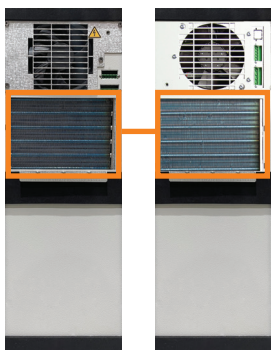
### SLIMLINE HEX Air / water heat exchangers



- ✓ An optimal way of cooling when a cold water supply is readily available
- ✓ Optional with controller and magnetic valve
- ✓ Maintenance free
- ✓ Wall or recess mounting
- ✓ Variable cold air outlet



| Model   | Cooling capacity (L35W10) | Available voltages  | Dimensions (H x W x D) mm |
|---------|---------------------------|---|---------------------------|
| RK 7506 | 700 W                     | 120 - 230 V ~ 50/60 Hz, 230 ~ 50/60Hz<br>380-415 V 50 Hz 3~ 400-460 V 60 Hz 3 ~ | 600 x 250 x 127           |
| RK 7306 | 700 W                     | 120 - 230 V ~ 50/60 Hz, 230 ~ 50/60Hz<br>380-415 V 50 Hz 3~ 400-460 V 60 Hz 3 ~ | 370 x 520 x 131           |
| RK 7512 | 1,300 W                   | 230 V ~ 50/60Hz<br>380-415 V 50 Hz 3~ 400-460 V 60 Hz 3 ~                       | 950 x 305 x 192           |
| RK 7525 | 2,800 W                   | 230 V ~ 50/60Hz<br>380-415 V 50 Hz 3~ 400-460 V 60 Hz 3 ~                       | 1,350 x 395 x 192         |
| RK 7555 | 5,500 W                   | 230 V ~ 50/60Hz<br>380-415 V 50 Hz 3~ 400-460 V 60 Hz 3 ~                       | 1,550 x 455 x 232         |



KG 8506

RK 7506

#### SAME CUTOUT, EASY TO EXCHANGE

- ✓ True cutout and connection compatibility to SLIMLINE PRO air conditioners
- ✓ Design compatible thanks to the innovative Seifert product design

**RK 7506, RK 7306** compatible with:

KG 8506, KG 8505

**RK 7512** compatible with:

KG 8508, KG 8512, KG 8412

**RK 7525** compatible with:

KG 8515, KG 8520, KG 8525

**RK 7555** compatible with:

KG 8540, KG 8562, KG 8625



## SLIMLINE HEX

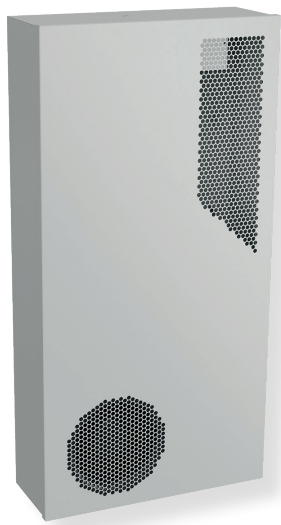
### Compact air / water heat exchangers



- ✓ An optimal way of cooling when a cold water supply is readily available
- ✓ Compact design, suitable also for smaller enclosures
- ✓ Maintenance free
- ✓ Wall or internal mounting



| Model         | Cooling capacity (L35W10) | Available voltages   | Dimensions (H x W x D) mm |
|---------------|---------------------------|--|---------------------------|
| RK 2300       | 350 W                     | 120 V ~ 60 Hz, 230 ~ 50/60 Hz, 24 V DC                                 | 303 x 153 x 84            |
| RK 2114 A 400 | 650 W                     | 120 V ~ 60 Hz, 230 ~ 50/60 Hz, 400 V ~ 50/ 60 Hz, 24 V DC, 48 V DC     | 400 x 212 x 80            |
| RK 2114 A 632 | 700 W                     | 120 V ~ 60 Hz, 230 V ~ 50/60 Hz, 400 V ~ 50/ 60 Hz                     | 632 x 212 x 80            |
| RK 2114 A 891 | 1,200 W                   | 120 V ~ 60 Hz, 230 V ~ 50/60 Hz, 400 V ~ 50/ 60 Hz 3~                  | 891 x 212 x 80            |
| RK 2100       | 1,300 W                   | 230 V ~ 50/60 Hz   | 525 x 303 x 136           |
| RK 2120       | 2,100 W                   | 120 V ~ 60 Hz, 230 ~ 50/60 Hz, 400 V ~ 50/ 60 Hz 2~                    | 950 x 400 x 180           |
| RK 2130       | 3,100 W                   | 120 V ~ 60 Hz, 230 V ~ 50/60 Hz, 400 V ~ 50/ 60 Hz 2~                  | 950 x 400 x 180           |
| RK 2149       | 4,800 W                   | 120 V ~ 60 Hz, 230 V ~ 50/60 Hz, 80-415 V 50 Hz 3~ 400-460 V 60 Hz 3 ~ | 1,400 x 460 x 242         |



## SLIMLINE HEX AIR

### Air/ air heat exchangers



- ✓ For Indoor and Outdoor applications (from 65 W/K)
- ✓ Electronic controller with display
- ✓ Protection class IP 54 / IP 56
- ✓ Maintenance free



| Model    | Heat exchanger performance | Available voltages              | Dimensions (H x W x D) mm |
|----------|----------------------------|---------------------------------|---------------------------|
| LT 58007 | 7 W/K                      | 120 V ~ 60 Hz, 230 V ~ 50/60 Hz | 508 x 196.5 x 152         |
| LT 58014 | 14 W/K                     | 120 V ~ 60 Hz, 230 V ~ 50/60 Hz | 749 x 254 x 151           |
| LT 58032 | 32 W/K                     | 120 V ~ 60 Hz, 230 V ~ 50/60 Hz | 750 x 254 x 151           |
| LT 58043 | 43 W/K                     | 120 V ~ 60 Hz, 230 V ~ 50/60 Hz | 1,194 x 254 x 151.3       |
| LT 58065 | 65 W/K                     | 120 V ~ 60 Hz, 230 V ~ 50/60 Hz | 914.4 x 460 x 173         |
| LT 58100 | 100 W/K                    | 120 V ~ 60 Hz, 230 V ~ 50/60 Hz | 914.4 x 460 x 218         |
| LT 58180 | 180 W/K                    | 120 V ~ 60 Hz, 230 V ~ 50/60 Hz | 1,524 x 609.6 x 356       |

# INDUSTRIAL PROCESS AND MACHINE COOLING

## SOLITHERM CHILL

For the first time, this new CHILLER series sets a standard for industrial applications: three different heights with eight different cooling capacities, always with the same basic foot print, allow a maximum of possibilities for industrial process and machine cooling.

The cooling capacities range from 1.5 to 12 kW. All models have the same design, identical connections and are equipped with the same operating philosophy.



## CHILLER

### for machines and plants



- ✓ Suitable for Indoor and Outdoor applications
- ✓ By using our App, you read data and configure system settings via Bluetooth
- ✓ Available with variable speed compressors
- ✓ Various option packages available (Outdoor, Efficiency and Communication)



| Model                                 | RC 6502 / 03 / 04                          | RC 6505 / 07          | RC 6508 / 10 / 12   |
|---------------------------------------|--|-----------------------|---|
| Cooling capacity L35W18               | 1,500 / 2,000 / 3,500 W                    | 5,000 / 6,500 W       | 7,500 / 10,000 / 12,000 W                                     |
| Cooland                               | Water, water / glycol mixtures, or similar |                       |   |
| Refrigerant                           | R513A or R134a                             | R513A                 |   |
| Capacity control                      | On / Off                                   |                       |   |
| Operating temperature range (liquid)  | 10°C - 25°C                                |                       |   |
| Operating temperature range (ambient) | 10°C - 50°C                                |                       |   |
| Coolant flow rate                     | 15 l/min. @ 2.5 bar                        | 20 l/min. @ 2.5 bar   | 30 l/min. @ 2.5 bar   |
| Coolant tank volume                   | 15 l                                       | 60 l                  | 60 l  |
| Mounting                              | Free standing (optional castor wheels)     |                       |   |
| Dimension H x W x D mm                | 650 x 595 x 595                            | 1,100 x 595 x 595     | 1,436 x 595 x 595 (RC 6508)<br>1,550 x 595 x 595 (RC 6510/12) |
| Housing material / colour             | Mild steel, powder coated RAL 7035         |                       |   |
| Water connection                      | 2 x G3/4" back below                       |                       |   |
| Voltage / Frequency                   | 230 V ~ 50/60 Hz<br>400/460 V 50/60 Hz 3~  | 400/460 V 50/60 Hz 3~ | 400/460 V 50/60 Hz 3~   |
| Protection class                      | IP 54                                      |                       |   |
| Certification                         | CE   |                       |   |

# THE RIGHT VENTILATION FOR YOUR ENCLOSURE

## SOLIFLEX - Filter fans & exhaust filters

SOLIFLEX filter fans and outlet filters effectively ventilate enclosures and control panels if the ambient temperature is lower than the internal enclosure temperature. Combined with thermostats, additional energy can be saved. The fan only operates when it is actually needed.

Our SOLIFLEX filter fans are also available in a reversed (blowing in) air flow mode and with NEMA 3R / IP 55 protection class.



### Filter fans

For a constant enclosure climate



- ✓ Wall or roof mounted
- ✓ Tool free installation and filter change
- ✓ Standard enclosure cutouts (5 sizes)
- ✓ Matching exhaust filters available
- ✓ Protection hoods against water jets and dust



| Model     | Air flow unimpeded | Available voltages   | Dimensions (H x W x D) mm | Mounting     |
|-----------|--------------------|--|---------------------------|--------------|
| FL 4010 A | 12 m³/h            | 120 V ~ 60 Hz, 230 V ~ 50/60 Hz  | 106.5 x 106.5 x 66.6      | Wall mounted |
| FL 4023 A | 21 m³/h            | 120 V ~ 60 Hz, 230 V ~ 50/60 Hz  | 106.5 x 106.5 x 79.5      | Wall mounted |
| FL 4210 A | 67 m³/h            | 120 V ~ 60 Hz, 230 ~ 50/60 Hz  | 150 x 150 x 73 mm         | Wall mounted |
| FL 4210 D | 47 m³/h            | 24 V DC, 48 V DC   | 150 x 150 x 73 mm         | Wall mounted |
| FL 4411 A | 110 m³/h           | 120 V ~ 60 Hz, 230 ~ 50/60 Hz  | 204 x 204 x 95,5          | Wall mounted |
| FL 4610 D | 225 m³/h           | 24 V DC, 48 V DC   | 250 x 250 x 124.2         | Wall mounted |
| FL 4620 A | 230 m³/h           | 120 V ~ 60 Hz, 230 ~ 50/60 Hz  | 250 x 250 x 124.2         | Wall mounted |
| FL 4621 A | 105 m³/h           | 120 V ~ 60 Hz, 230 V ~ 50/60 Hz  | 250 x 250 x 111.8         | Wall mounted |
| FL 4830 A | 455 m³/h           | 120 V ~ 60 Hz, 230 V ~ 50/60 Hz<br>380-415 V 50 Hz 3~ 400-460 V 60 Hz 3~ | 325 x 325 x 160.2         | Wall mounted |
| FL 4883 A | 820 m³/h           | 120 V ~ 60 Hz, 230 V ~ 50/60 Hz<br>400/460 V ~ 50/60 Hz 3~               | 325 x 325 x 158.5         | Wall mounted |
| FL 6064 A | 275 m³/h           | 120 V ~ 60 Hz, 230 ~ 50/60 Hz  | 147 x 457 x 457           | Roof mounted |
| FL 6065 A | 490 m³/h           | 120 V ~ 60 Hz, 230 V ~ 50/60 Hz<br>400/460 V ~ 50/60 Hz 3~               | 147 x 457 x 457           | Roof mounted |
| FL 6085 A | 630 m³/h           | 120 V ~ 60 Hz, 230 V ~ 50/60 Hz<br>400/460 V ~ 50/60 Hz 3~               | 147 x 457 x 457           | Roof mounted |
| FL 6095 A | 970 m³/h           | 120 V ~ 60 Hz, 230 V ~ 50/60 Hz<br>400/460 V ~ 50/60 Hz 3~               | 147 x 457 x 457           | Roof mounted |
| FL 6995 A | 1,400 m³/h         | 120 V ~ 60 Hz, 230 ~ 50/60 Hz<br>400/460 V ~ 50/60 Hz 3~                 | 147 x 457 x 457           | Roof mounted |
| FL 6996 A | 1,500 m³/h         | 230 V ~ 50/60 Hz   | 241 x 550 x 550           | Roof mounted |

# WITHOUT HUMIDITY AND CONDENSATION

SOLIFLEX - enclosure heaters

Temperature differences in enclosures, mostly in outdoor applications, often result in humidity and condensation which may cause malfunctions and corrosion. The use of the appropriate heating unit will eliminate these problems. SOLIFLEX fan heaters have a small and compact design, they heat up dynamically and are very quiet in operation. The internal warm air is equally distributed throughout the enclosure.

A major advantage of fan heaters compared to PTC heaters is the much lower starting current. PTC heaters are compact in size, have a wider voltage range and the heating power adjusts in relation to the ambient temperature, resulting in better efficiency.



## Enclosure heaters

For the right enclosure temperature



- ✓ Compact size for small enclosures
- ✓ Low noise
- ✓ Dynamic heating through PTC technology
- ✓ Energy efficient and environmentally friendly
- ✓ Wide voltage range



| Model  | Heating power at 10°C | Available voltages                           | Heater type                             |
|--------|-----------------------|--|---|
| KH 501 | 25 W                  | 110 - 240 V AC / DC                          | PTC heater                              |
| KH 501 | 50 W                  | 110 - 240 V AC / DC                          | PTC heater                              |
| KH 501 | 75 W                  | 110 - 240 V AC / DC                          | PTC heater                              |
| KH 501 | 100 W                 | 110 - 240 V AC / DC                          | PTC heater                              |
| KH 501 | 150 W                 | 110 - 240 V AC / DC                          | PTC heater                              |
| KH 401 | 350 W                 | 100 - 240 V ~ 60 / 60 Hz, fan 24 V DC, 1.6 W | PTC heater with fan                     |
| KH 503 | 250 W                 | 120 V ~ 60 Hz, 230 V ~ 50/60 Hz              | PTC heater with fan                     |
| KH 503 | 400 W                 | 120 V ~ 60 Hz, 230 V ~ 50/60 Hz              | PTC heater with fan                     |
| KH 503 | 500 W                 | 120 V ~ 60 Hz, 230 V ~ 50/60 Hz              | PTC heater with fan                     |
| KH 503 | 750 W                 | 120 V ~ 60 Hz, 230 V ~ 50/60 Hz              | PTC heater with fan                     |
| KH 801 | 125 W                 | 120 V ~ 60 Hz, 230 V ~ 50/60 Hz              | Resistor heater with fan and thermostat |
| KH 801 | 200 W                 | 120 V ~ 60 Hz, 230 V ~ 50/60 Hz              | Resistor heater with fan and thermostat |
| KH 801 | 400 W                 | 120 V ~ 60 Hz, 230 V ~ 50/60 Hz              | Resistor heater with fan and thermostat |
| KH 801 | 800 W                 | 120 V ~ 60 Hz, 230 V ~ 50/60 Hz              | Resistor heater with fan and thermostat |
| KH 801 | 1,300 W               | 120 V ~ 60 Hz, 230 V ~ 50/60 Hz              | Resistor heater with fan and thermostat |

# ENCLOSURE ACCESSORIES

SOLIFLEX - thermostats, hygrostats, sensors and LED lights

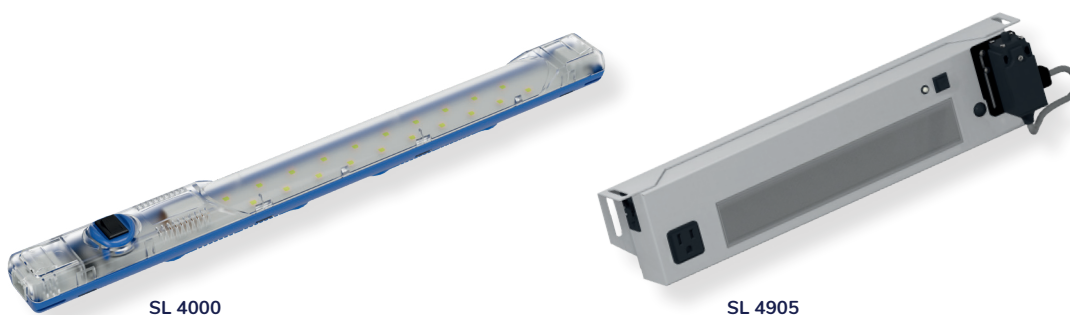
SOLIFLEX thermostats and hygrostats ensure an optimal climate inside your enclosures or cabinets. They are available as normally closed, NC (red disk) or as normally open, NO (blue disk) and are available as mechanical or electronic versions.



| Model                 | Switching range   | Available voltages  | Dimensions (H x W x D) mm | Type                                       |
|-----------------------|---|---|---------------------------|--|
| CC 3010 (NO)          | OFF 10°C / 50°F - 25°C / 77°F<br>ON 0°C / 32°F - 15°C / 59°F    | max. 250 V AC 16 A(res)<br>10 A(ind) max. 72 V DC max. 30 W                               | 60 x 39 x 38.9            | Thermostat pre-set                         |
| CC 3010 (NC)          | ON 35°C / 95°F - 60°C / 140°F<br>OFF 25°C / 77°F - 50°C / 122°F | max. 250 V AC 16 A(res)<br>10 A(ind) max. 72 V DC max. 30 W                               | 60 x 39 x 38.9            | Thermostat pre-set                         |
| CC 3011               | -10°C / 14°F - 80°C / 176°F<br>NC or NO                         | max. 250 V AC 16 A(res)<br>10 A(ind) max. 72 V DC max. 30 W                               | 60 x 39 x 42.4            | Thermostat variable                        |
| CC 3012               | -10°C / 14°F - 80°C / 176°F<br>NCNC, NONO or NCNO               | max. 250 V AC 16 A(res)<br>10 A(ind) max. 72 V DC max. 30 W                               | 60 x 72.3 x 42.4          | Twin thermostat variable                   |
| CC 3013               | 0°C / 32°F - 60°C / 140°F                                       | AC: 250 V / 10 A(res) / 2 A(ind) DC: 72 V / 30 W<br>UL: max.250 V AC NC/NO: 10 / 5 A(res) | 60 x 39 x 53.3            | Changover thermostat with thermal feedback |
| CC 3014               | 30% - 90%r.H.   | max. 230 V AC 2 A (hum) / 5 A (dehum)   | 60 x 39 x 42.4            | Mechanical hygrostat                       |
| CC 3015 <sup>1)</sup> | 0°C / 32°F - 60°C / 140°F                                       | 24 V DC / 16 A  | 60 x 39 x 53.3            | Electronic thermostat                      |
| CC 3016 <sup>1)</sup> | 30 - 90% r.H  | 24 V DC / 16 A  | 60 x 39 x 53.3            | Electronic hygrostat                       |

<sup>1)</sup> Pluggable temperature and humidity sensors available

STRIPLITE LED enclosure lights have been designed to meet the criteria of illuminating industrial enclosures and cabinets. They are the optimal solution for energy saving and maintenance free lighting.



| Model                 | Light output | Available voltages              | Dimensions (H x W x D) mm | Energy class |
|-----------------------|--------------|---------------------------------|---------------------------|--------------|
| SL4000 <sup>1)</sup>  | 400 Lm       | 24-265 V DC/AC ~ 0/50/60 Hz     | 357.4 x 32 x 35.5         | G            |
| SL4007 <sup>1)</sup>  | 700 Lm       | 120-240 V ~ 50/60 Hz            | 357.4 x 32 x 35.5         | F            |
| SL 4905 <sup>2)</sup> | 1,500 Lm     | 115-230 V ~ 50/60 Hz            | 420 x 90 x 45             | E            |
| SL 4905 <sup>3)</sup> | 1,500 Lm     | 115 V ~ 60 Hz, 230 V ~ 50/60 Hz | 420 x 90 x 45             | E            |
| SL 4905 <sup>4)</sup> | 1,500 Lm     | 24 V DC                         | 420 x 90 x 45             | E            |

<sup>1)</sup> With On / Off switch or motion sensor

<sup>2)</sup> With motion sensor

<sup>3)</sup> With motion sensor, power socket and Daisy Chain (Door contact optional)

<sup>4)</sup> With motion sensor and Daisy Chain (Door contact optional)

**SEIFERT SYSTEMS GmbH****Germany**

Albert-Einstein-Str. 3  
42477 Radevormwald  
+49 2195 68994-0  
info.de@seifertsystems.com

**SEIFERT SYSTEMS Ltd.****Skandinavia / Baltic States**

Sales office  
25421 Pinneberg  
+49 2195 68994-40  
info.sk@seifertsystems.com

**SEIFERT SYSTEMS Ltd.****Malta**

HF 09/10, Hal Far Ind. Estate  
BBB 3000 Birzebbuga  
+356 2220 7000  
info@seifertsystems.com

**SEIFERT SYSTEMS SA****France**

Wilerstraße 16  
4563 Gerlafingen  
+33 7 65298156  
info.fr@seifertsystems.com

**SEIFERT SYSTEMS GmbH****Austria**

Bärnthäl 1  
4901 Ottmang am Hausruch  
+43 7676 207120  
info.at@seifertsystems.com

**SEIFERT SYSTEMS Inc.****USA**

75 Circuit Dirve  
North Kingstown, RI 02852  
+1 401-294-6960  
info.us@seifertsystems.com

**SEIFERT SYSTEMS AG****Switzerland**

Wilerstraße 16  
4563 Gerlafingen  
+41 32 6753551  
info.ch@seifertsystems.com

**C.D. Automation Pvt. Ltd.****India**

8, Parsee Church Street  
Kolkata - 7000 001  
+91 33 2215 7080  
info@seifertsystems.com

**SEIFERT SYSTEMS Ltd.****Italy**

Sales office  
26100 Cremona  
+39 349 2594524  
info.it@seifertsystems.com

**SEIFERT SYSTEMS Pty Ltd.****Australia**

105 Lewis Road  
Victoria 3152  
+61 3 98011906  
info@seifertsystems.com.au