

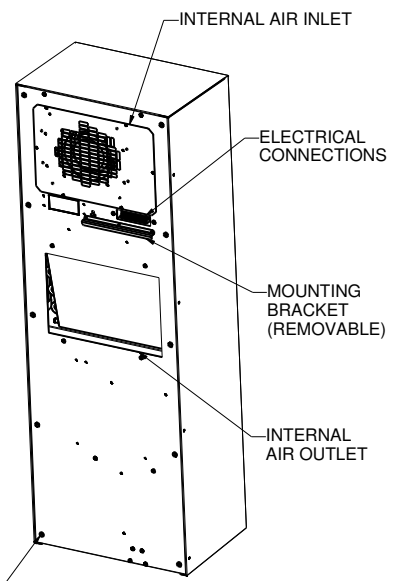
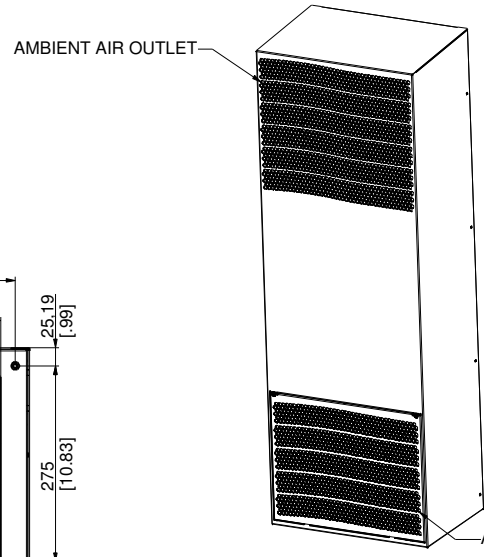
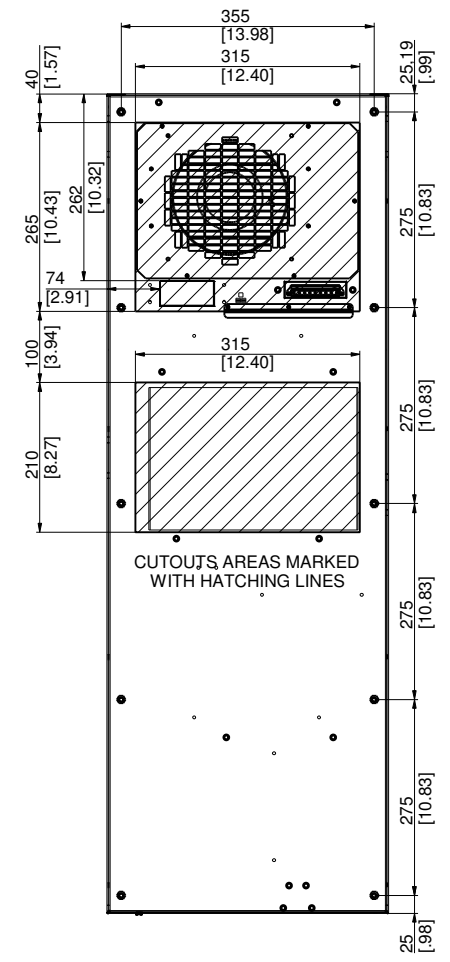
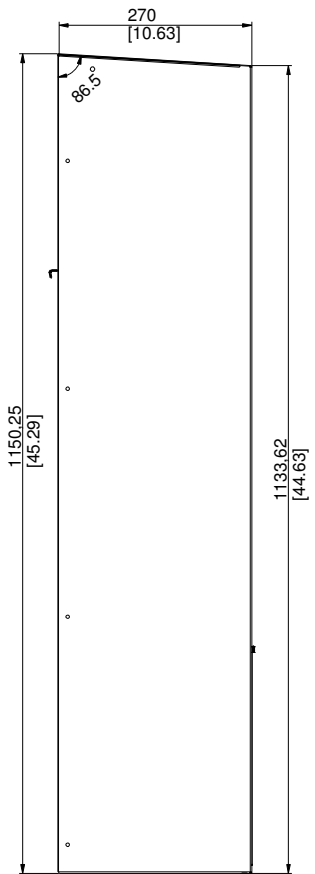
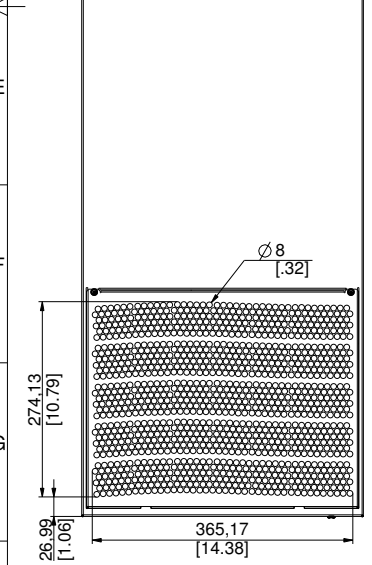
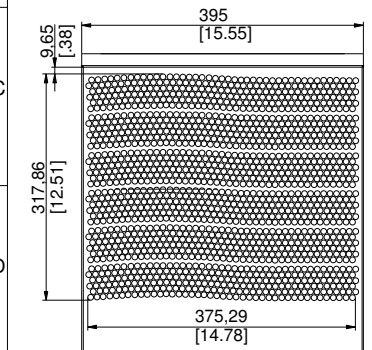
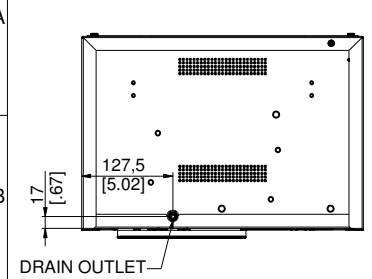


UNLESS OTHERWISE SPECIFIED, DIMENSIONS ARE IN MM. DIMENSIONS W/O TOLERANCES ISO2768-mK AS FOLLOWS. SURFACES ISO1302. TOLERANCES ARE NOT CUMULATIVE.

LINEAR DIMENSIONS							
0.5 to 3	>3 to 6	>6 to 30	>30 to 120	>120 to 400	>400 to 1000	>1000 to 2000	>2000 to 4000
±0.1	±0.1	±0.2	±0.3	±0.5	±0.8	±1.2	±2

ANGULAR DIMENSIONS				BEND DIRECTION	
to 10	>10 to 50	>50 to 120	>120 to 400	>400	
±1°	±0°30'	±0°20'	±0°10'	±0°5'	 BEND OUT  BEND IN



- NOTES:
- THIS IS A PRO/ENGINEER PARAMETRIC DRAWING. ANY CHANGES MUST BE WITHIN PRO/INTRALINK.
 - REMOVE ALL BURRS AND SHARP EDGES.

REV	BY	DATE	DESCRIPTION
1.3	DC	13.05.19	Changed and relocated controller
1.2	GZ	08.06.15	Added dual dimensions
1.1	GZ	10.10.14	Updated part number

Art.no.:	5715/20 XXX XX
Material:	-

Complete unit OC-5715/20			
Designed:	G.Zammit	07.07.2014	FIRST ANGLE PROJECTION
Drawn:	G.Zammit	15.07.2014	SHEET SCALE
Checked:	K.Zammit	Approved:	K.Zammit
40875			1 of 1 ISSUE SIZE 1.3 A2

40875	DRAWING	1. Work In Progress
OC5715_COMPLETE_ASSEMBLY	ASSEM	1. Work In Progress
PRO/E FILENAME	FILE TYPE	REV RELEASE

