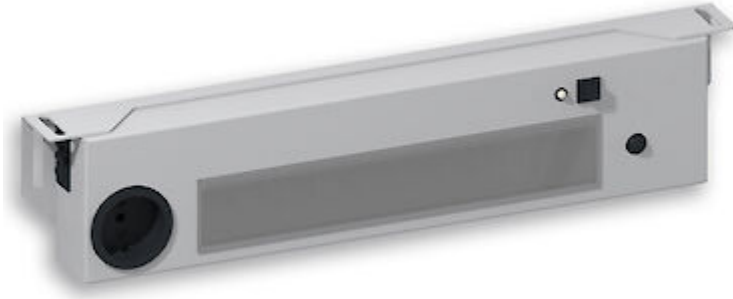


Sensor operated LED lamp. Only for installation inside industrial control cabinets.



## Description

<b>Order Number:</b>	490502612
<b>Color:</b>	RAL 9003
<b>Housing Material:</b>	Mild steel, powder coated
<b>Ingress protection to EN 60 529:</b>	IP 20
<b>Included:</b>	Bewegungsmelder Schuko Steckdose (max. 16 A) Daisy Chain max. 10
<b>Approvals:</b>	CE

## Technical data

<b>Operating temperature range:</b>	-22°F - 122°F
<b>Mounting:</b>	M5 Schrauben (x2)
<b>Dimension H x W x D:</b>	16.54 x 3.54 x 1.77 inch
<b>Weight:</b>	2 kg
<b>Voltage / Frequency:</b>	230 V ~ 50/60 Hz
<b>Rated current:</b>	16.8 A
<b>Power consumption:</b>	16 W
<b>Lamp:</b>	EB-7801
<b>Luminosity:</b>	1500 lm / 5100 K
<b>Lifetime:</b>	60,000 hrs. @ 68°F
<b>Connection:</b>	Empfohlene externe Vorsicherung: 17 A (T) oder Schutzschalter C16



## Order Information

**Zolltarifnummer**

94054990

---