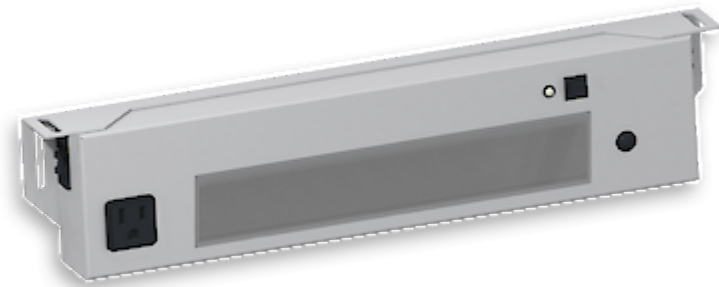


Sensor operated LED lamp. Only for installation inside industrial control cabinets.



## Description

<b>Order Number:</b>	490513612
<b>Color:</b>	RAL 9003
<b>Housing Material:</b>	Mild steel, powder coated
<b>Ingress protection to EN 60 529:</b>	IP 20
<b>Included:</b>	Bewegungsmelder NEMA 5-15 Steckdose (max. 10.6 A) Daisy Chain
<b>Sk Hinweis:</b>	Suitable for damp locations
<b>Approvals:</b>	CE, cURus
<b>UL File Number:</b>	E358386

## Technical data

<b>Operating temperature range:</b>	-22°F - 122°F
<b>Mounting:</b>	M5 Schrauben (x2)
<b>Dimension H x W x D:</b>	16.54 x 3.54 x 1.77 inch
<b>Weight:</b>	2 kg
<b>Voltage / Frequency:</b>	115 V ~ 50/60 Hz
<b>Rated current:</b>	10.6 A
<b>Power consumption:</b>	16 W
<b>Lamp:</b>	EB-7801
<b>Luminosity:</b>	1500 lm / 5100 K
<b>Lifetime:</b>	60,000 hrs. @ 68°F
<b>Connection:</b>	Wieland/Adels connector



## Order Information

**Zolltarifnummer**

94054990

---